

THOMAS' *journey* WITH THE  
JUVÉDERM® COLLECTION OF FILLERS

Actual patient. Results may vary.



COLLECTION OF FILLERS

*“My lines are smoother, and my cheeks look fuller.  
I really recommend these products.”*

–Thomas

**JUVÉDERM VOLUMA® XC, JUVÉDERM® XC, and  
JUVÉDERM® Ultra XC Important Information**

**APPROVED USES**

JUVÉDERM VOLUMA® XC injectable gel is for deep injection in the cheek area to correct age-related volume loss in adults over 21.

JUVÉDERM® XC injectable gel is for injection into the facial tissue for the correction of moderate to severe facial wrinkles and folds, such as nasolabial folds.

JUVÉDERM® Ultra XC is for injection into the lips and perioral area for lip augmentation in adults over 21.

**Please see Important Safety Information inside.**



## SEE THOMAS' *journey*

### DIFFERENT FORMULATIONS FOR DIFFERENT PATIENT NEEDS

#### LIFT

  
V O L U M A<sup>®</sup> X C

#### LIFT & CONTOUR THE CHEEK AREA

JUVÉDERM VOLUMA<sup>®</sup> XC is the only filler proven to last up to 2 years in the cheek area.\*

#### SMOOTH

 Juvéderm<sup>®</sup> XC

#### SMOOTH WRINKLES & LINES

JUVÉDERM<sup>®</sup> XC is the only HA filler proven to last up to 1 year in moderate to severe facial wrinkles and lines.\*

\*With optimal treatment.

### Are products in the JUVÉDERM<sup>®</sup> Collection of Fillers right for you? Here's what to look for:

- A loss of fullness in your cheek area
- Deepening lines around your nose and mouth
- Thinning or naturally thin lips

### Ask your aesthetic specialist about starting your own JUVÉDERM<sup>®</sup> journey.

Actual patient. Results may vary.

#### IMPORTANT SAFETY INFORMATION

##### Are there any reasons why I should not receive any JUVÉDERM<sup>®</sup> injectable gel formulation?

Do not use these products if you have a history of multiple severe allergies or severe allergic reactions (anaphylaxis), or if you are allergic to lidocaine or the gram-positive bacterial proteins used in these products.

##### What precautions should my doctor advise me about?

- Tell your doctor if you are pregnant or breastfeeding. The safety of these products for use during pregnancy or while breastfeeding has not been studied
- The safety of JUVÉDERM<sup>®</sup> XC and JUVÉDERM<sup>®</sup> Ultra XC injectable gels in patients under 18 years, and the safety of JUVÉDERM VOLUMA<sup>®</sup> XC in patients under 35 years or over 65 years has not been studied

#### IMPORTANT SAFETY INFORMATION (continued)

##### What precautions should my doctor advise me about? (continued)

- The safety and effectiveness of JUVÉDERM<sup>®</sup> XC for areas other than facial wrinkles and folds, and JUVÉDERM<sup>®</sup> Ultra XC for areas other than the lips and perioral area for lip augmentation, or facial wrinkles and folds, have not been established in clinical studies
- The safety and effectiveness of JUVÉDERM VOLUMA<sup>®</sup> XC in areas other than the cheek area have not been established in clinical studies

**Please see Important Safety Information on following pages.**



# THOMAS' *journey* WITH THE JUVÉDERM® COLLECTION OF FILLERS

Natural-looking, long-lasting results

Juvéderm  
VOLUMA® XC

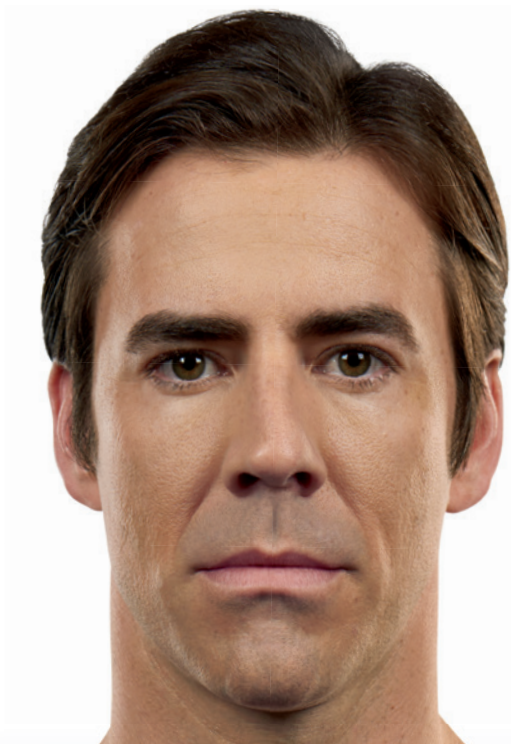
Juvéderm  
VOLUMA® XC

Juvéderm® XC

**VOLUMIZE**  
for a subtle lift in your  
cheek area.

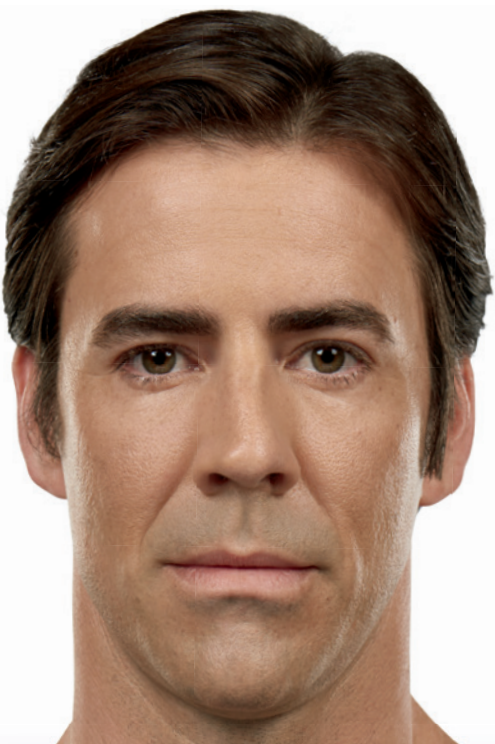
**OPTIMIZE**  
your results by adding more  
volume for correction, as needed.

**CUSTOMIZE**  
with additional treatments  
to smooth lines.



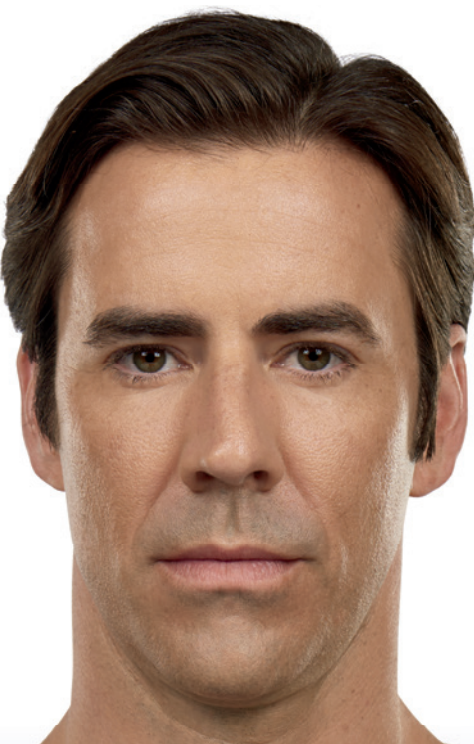
*Before*

Actual patient. Results may vary. Unretouched photo taken before treatment.



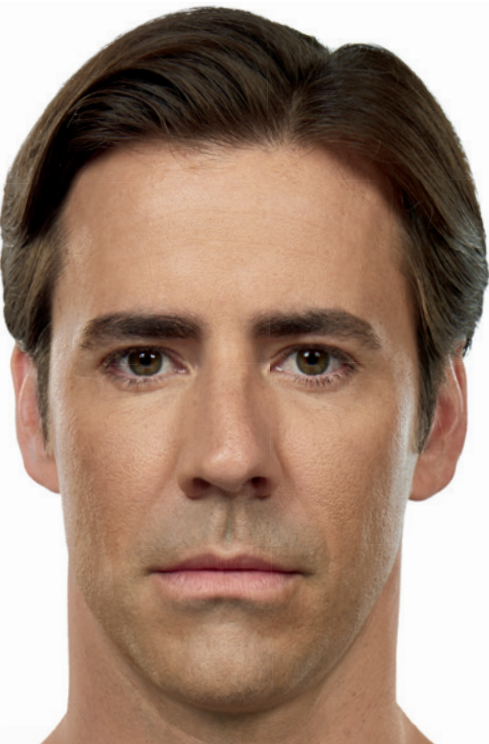
*After*  
1 syringe of  
JUVÉDERM VOLUMA® XC

Actual patient. Results may vary. Unretouched photo taken 1 month after treatment with JUVÉDERM VOLUMA® XC. A total of 1.0 mL of JUVÉDERM VOLUMA® XC was injected into the cheek area.



*After*  
optimal correction with  
JUVÉDERM VOLUMA® XC

Actual patient. Results may vary. Unretouched photo taken 1 month after second treatment with JUVÉDERM VOLUMA® XC. An additional 1.6 mL was injected into the cheek area for a total of 2.6 mL.



*After*  
smoothing lines with  
JUVÉDERM® XC

Actual patient. Results may vary. Unretouched photo taken 1 month after final treatment. A total of 2.6 mL of JUVÉDERM VOLUMA® XC was injected into the cheek area. A total of 2.4 mL of JUVÉDERM® XC was injected into the parentheses and marionette lines.

## IMPORTANT SAFETY INFORMATION (continued)

### What precautions should my doctor advise me about? (continued)

- Tell your doctor if you have a history of excessive scarring (eg, hypertrophic scarring and keloid formations) or pigmentation disorders, as use of these products may result in additional scars or changes in pigmentation
- Tell your doctor if you are planning other laser treatments or a chemical peel, as there is a possible risk of inflammation at the treatment site if these procedures are performed after treatment
- Patients who experience skin injury near the site of injection with these products may be at a higher risk for side effects

## IMPORTANT SAFETY INFORMATION (continued)

### What precautions should my doctor advise me about? (continued)

- Tell your doctor if you are on immunosuppressive therapy used to decrease the body's immune response, as use of these products may result in an increased risk of infection
- Tell your doctor if you are using medications that can prolong bleeding, such as aspirin, ibuprofen, or other blood thinners, as this may result in increased bruising or bleeding at the injection site
- Minimize strenuous exercise, exposure to extensive sun or heat, and alcoholic beverages within the first 24 hours following treatment

## IMPORTANT SAFETY INFORMATION (continued)

### What are possible side effects?

The most common side effects include tenderness, swelling, firmness, lumps/bumps, bruising, pain, redness, discoloration, and itching. With JUVÉDERM® XC and JUVÉDERM® Ultra XC injectable gels, most side effects are mild or moderate and last 14 days or less. For JUVÉDERM VOLUMA® XC, side effects are moderate (uncomfortable) and last 2 to 4 weeks.

One of the risks with using this product is unintentional injection into a blood vessel, and while rare, the complications can be serious and may be permanent. These complications, which have been reported for facial injections, can include vision abnormalities, blindness, stroke, temporary scabs, or permanent scarring.

**Please see Important Safety Information on the back.**

Juvéderm®

COLLECTION OF FILLERS



*Ready to start  
your own  
customized  
journey?*

*Ask your aesthetic specialist*

- Which JUVÉDERM® product(s) are right for me?
- How can I achieve my aesthetic goals?
- How soon will I see results?
- How long will my results last?
- Are there any potential risks or side effects?



COLLECTION OF FILLERS

**IMPORTANT SAFETY INFORMATION (continued)**

**What are possible side effects? (continued)**

As with all skin injection procedures, there is a risk of infection.

To report a side effect with JUVÉDERM VOLUMA® XC, JUVÉDERM® XC, or JUVÉDERM® Ultra XC, please call Allergan Product Surveillance at **1-800-624-4261**.

**For more information, please see [Juvederm.com](http://Juvederm.com) or call Allergan Medical Information at 1-800-433-8871.**

Available by prescription only.



© 2016 Allergan. All rights reserved.

All trademarks are the property of their respective owners.

**Juvederm.com** Re-order: APC63UQ16 161570